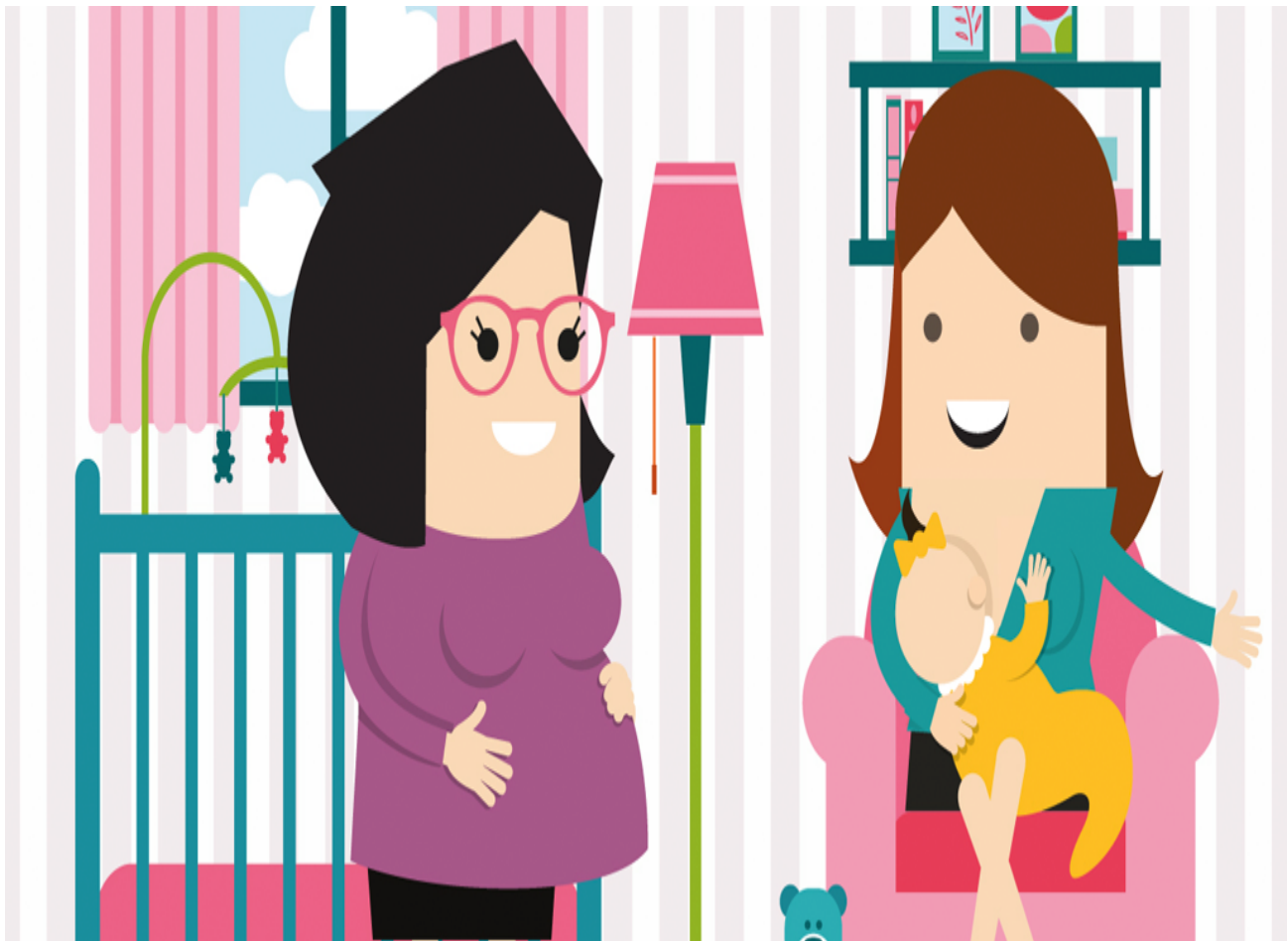


Resource

## Rheumatoid arthritis & pregnancy

RA is more common in females and often presents at an age when people are considering starting families. The management of RA before, during and after pregnancy, is an important topic.

[Print](#)



PLEASE NOTE: This article is currently in review. The British Society for Rheumatology (BSR) have produced guidelines on pregnancy and RA and these guidelines, last updated in 2022 can be found [here](#).