

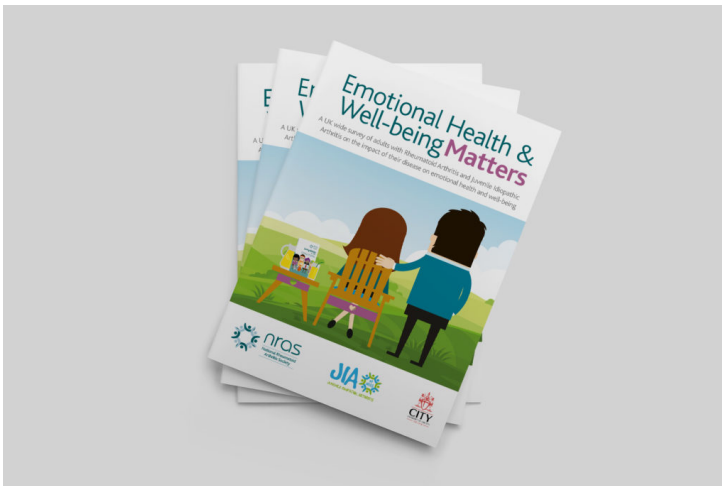
Resource

# Emotional Health & Well-being Matters

[Print](#)

A UK-wide survey of adults with RA and JIA on the impact of their disease on emotional health and well-being.

In addition to dealing with the physical effects of the disease, people have to cope with the burden of treatment, taking regular medication, attending hospital outpatient clinics and sometimes facing major surgery. Not only do individuals have to come to terms with symptoms and varying treatments, but they have to adapt to altered life plans, reduced employment prospects and uncertainty about the future course of their disease and its impact on their lives.



[Order publication](#)

This article was downloaded from [www.nras.org.uk](http://www.nras.org.uk). National Rheumatoid Arthritis Society (NRAS) is a registered charity in England and Wales (1134859) and Scotland (SC039721). A private company limited by guarantee. Registered in England and Wales (7127101).