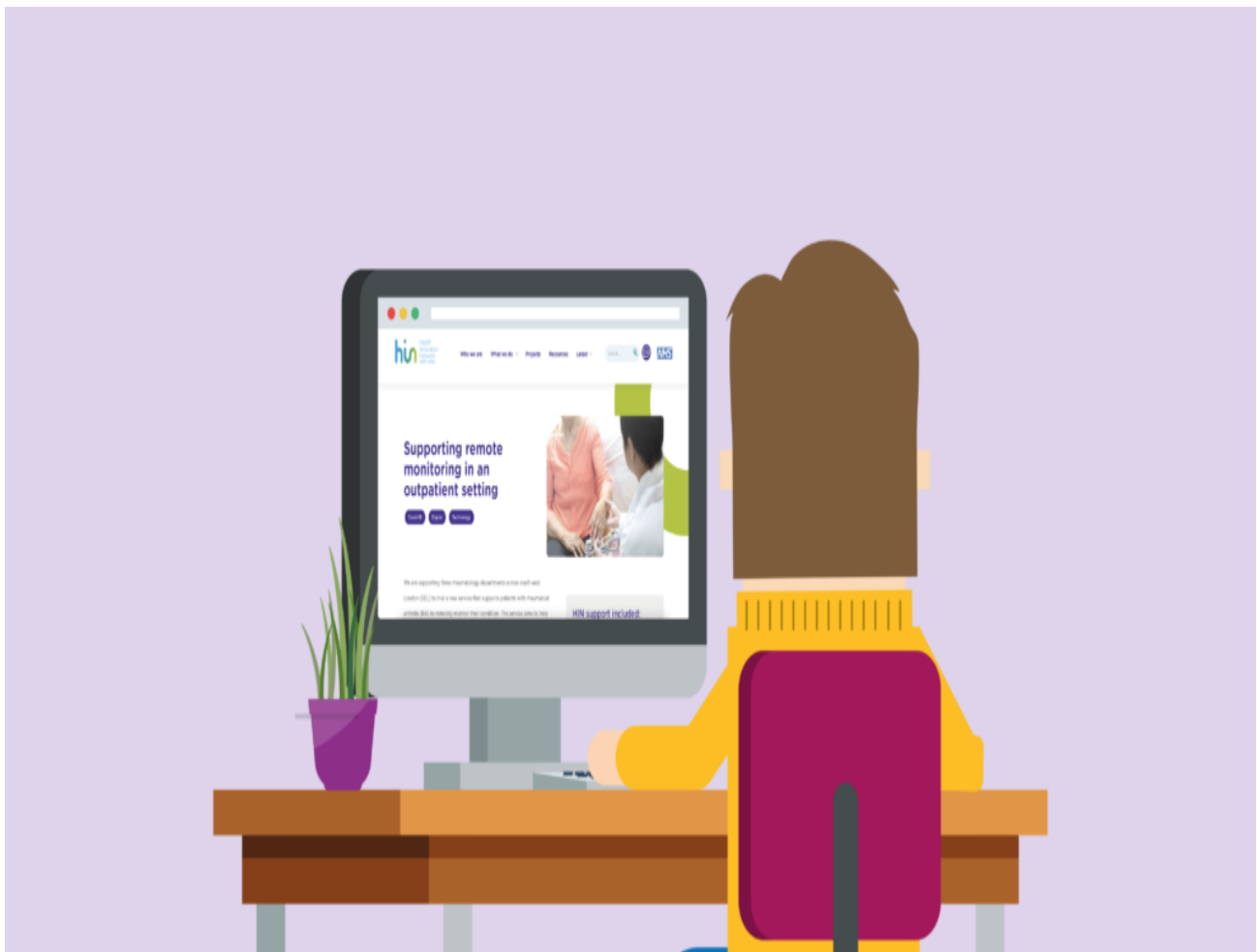


Resource

# Remote Monitoring in Rheumatoid Arthritis Project

Call for service users and carers to join our Lived Experience Advisory Community

[Print](#)



NRAS are supporting the following project. Please read and if interested get involved! You need to live in South London to take part and be a patient at Guy's and St Thomas' NHS Foundation Trust, King's College Hospital NHS Foundation Trust, or Lewisham and Greenwich NHS Trust.

- Do you live in south London and have experience of living with Rheumatoid Arthritis, or are the family member, friend or carer for someone with this condition?

- Would you like to be part of a community mailing list for an evaluation project looking at a new digital way of supporting people with Rheumatoid Arthritis?
- Would you like the opportunity to use your lived experience and expertise in Rheumatoid Arthritis to help shape this project?

If yes, please read on...

Health Innovation Network are a team of researchers, clinicians and a Patient and Public Involvement (PPI) co-ordinator from Kings College London, the Health Innovation Network, and Guy's and St Thomas' NHS Foundation Trust. They are looking to evaluate the implementation of a new digital or remote monitoring service for people using Rheumatoid Arthritis outpatient clinics at Guy's and St Thomas' NHS Foundation Trust, King's College Hospital NHS Foundation Trust, and Lewisham and Greenwich NHS Trust.

An important aspect of this new service is that it is focused on monitoring Patient Reported Outcome Measures (PROMS), which are reports from patients about how they feel or function in relation to a specific health condition. HIN (Health Innovation Network) are interested in whether this new service is feasible, how it is experienced by patients and staff, and whether it can and should be provided to even more people. Watch the video and read more [here](#).

PPI is a crucial element of work and so Health Innovation Network would like to invite you to join their Lived Experience Advisory Community. Members of this community will be kept up to date via e-bulletins and will be able to help shape the project through paid involvement opportunities. These might include taking part in group workshops, one-to-one conversations or attending project group meetings. If you would like more information or have any questions, please contact Len Demetriou (PPI Co-ordinator) on [len.demetriou@kcl.ac.uk](mailto:len.demetriou@kcl.ac.uk) by Saturday 31 July.

This article was downloaded from [www.nras.org.uk](http://www.nras.org.uk). National Rheumatoid Arthritis Society (NRAS) is a registered charity in England and Wales (1134859) and Scotland (SC039721). A private company limited by guarantee. Registered in England and Wales (7127101).